



Berth 17 Emerald Quay | | Shoreham-By-Sea | BN43 5JP



## Berth 17 Emerald Quay | | Shoreham-By-Sea | BN43 5JP

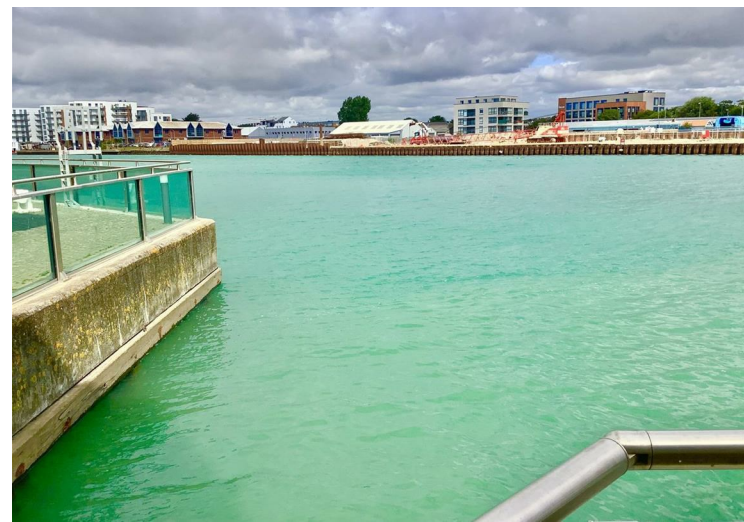
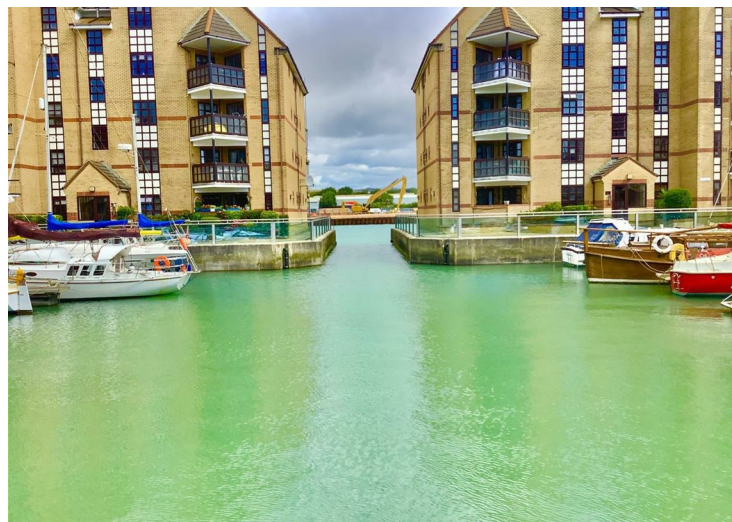
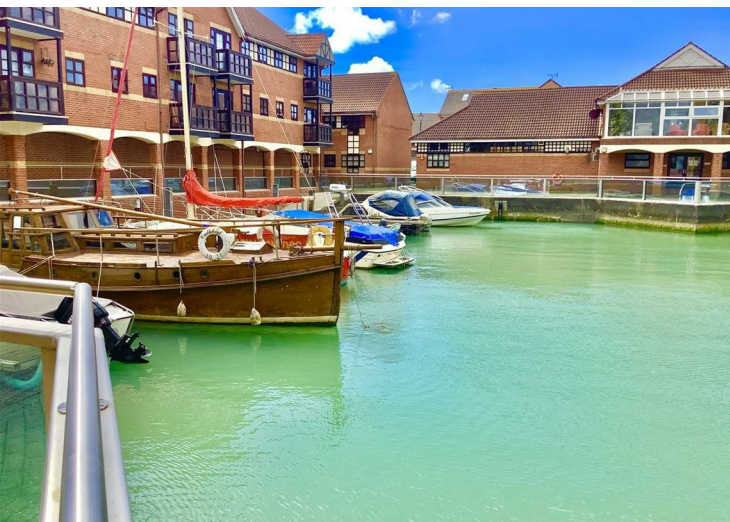
£16,750

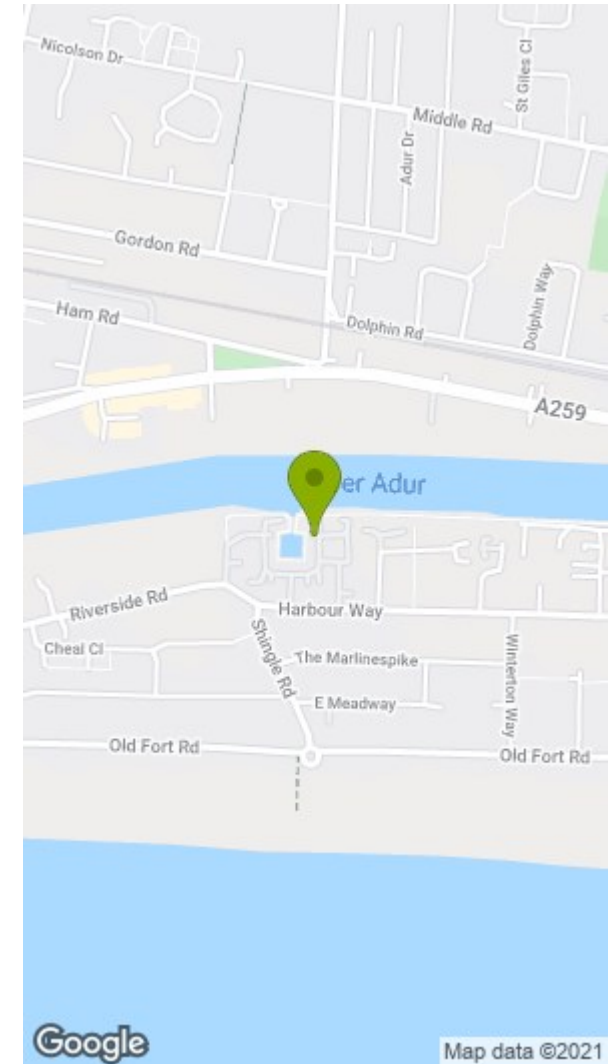
\*\*\* £16,750 \*\*\*

WARWICK BAKER ESTATE AGENTS ARE DELIGHTED TO MARKET THIS 10M MOORING IN EMERALD QUAY.

THE BERTH PAYS £75 PER ANNUM MANAGEMENT FEE PLUS 1/20th OF ANY EXPENDITURE. VIEWING HIGHLY RECOMMENDED BY THE VENDORS SOLE AGENT. NO UPWARD CHAIN.

PLEASE CALL FOR MORE DETAILS - 01273 461144





**Disclaimer**

\* These particulars are intended to give a fair and substantially correct overall description for the guidance of intending purchasers and do not constitute an offer or part of a contract. Prospective purchasers and/or lessees ought to seek their own independent professional advice.

\* All descriptions, dimensions, areas, references to condition and necessary permissions for use and occupation and other details are given in good faith and are believed to be correct, but any intending purchasers should not rely on them as statements or representations of fact, but must satisfy themselves by inspection or otherwise as to the correctness of each of them.

\* All measurements are approximate

| Energy Efficiency Rating                    |  | Current                 | Potential | Environmental Impact (CO <sub>2</sub> ) Rating                  |  | Current                 | Potential |
|---|--|-------------------------|-----------|---|--|-------------------------|-----------|
| Very energy efficient - lower running costs |  |                         |           | Very environmentally friendly - lower CO <sub>2</sub> emissions |  |                         |           |
| (92 plus) A                                 |  |                         |           | (92 plus) A   |  |                         |           |
| (81-91) B                                   |  |                         |           | (81-91) B   |  |                         |           |
| (69-80) C                                   |  |                         |           | (69-80) C   |  |                         |           |
| (55-68) D                                   |  |                         |           | (55-68) D   |  |                         |           |
| (39-54) E                                   |  |                         |           | (39-54) E   |  |                         |           |
| (21-38) F                                   |  |                         |           | (21-38) F   |  |                         |           |
| (1-20) G                                    |  |                         |           | (1-20) G  |  |                         |           |
| Not energy efficient - higher running costs |  |                         |           | Not environmentally friendly - higher CO <sub>2</sub> emissions |  |                         |           |
| England & Wales                             |  | EU Directive 2002/91/EC |           | England & Wales   |  | EU Directive 2002/91/EC |           |